

Arp Case Report n° 12: What is your diagnosis?

Caso Clínico ARP n°12: Qual o seu diagnóstico?

Carlos Francisco Silva

Serviço de Radiologia, Centro Hospitalar de Setúbal, Setúbal, Portugal

Apresentação do Caso

A 69-year-old female, on follow-up after a left adrenalectomy 4 years ago (pathologically proven cortical adenoma, after

removal). Also, prior surgical history of intestinal volvulus 18 years ago. She had chronic left flank pain, already present before the adrenalectomy.



Figure 1 – Axial CT image.



Figure 2 – CT Coronal view.

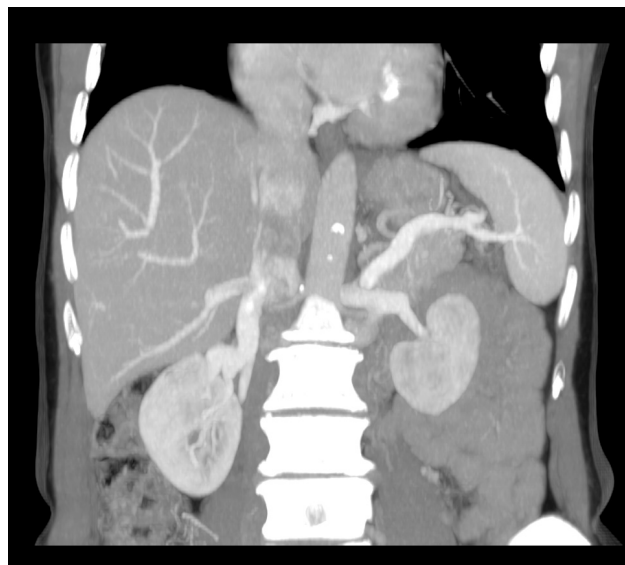


Figure 3 – MIP reconstruction.

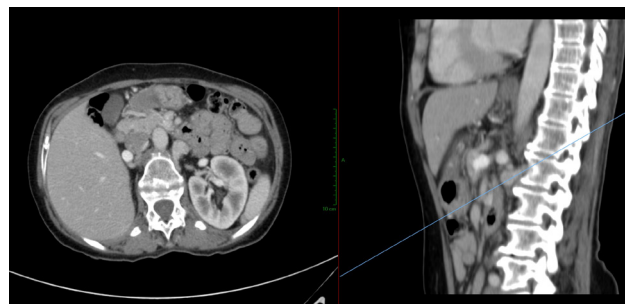


Figure 4 – Axial oblique CT image, and the corresponding level on sagittal at the right side of the image.

Envie a sua resposta contendo o(s) diagnóstico(s), para o endereço de email actarp.on@gmail.com.
Os nomes dos autores das respostas correctas serão publicados no próximo número da ARP na solução do caso.