

Images of Interest / Imagens de Interesse

## Langerhans Cell Histiocytosis: Bizarre Pulmonary Cysts

### *Histiocitose de Células de Langerhans: Quistos Pulmonares Bizarros*

João Paulo Silva, Tito Abrantesa, António Reisa

Serviço de Pneumologia, Centro Hospitalar  
Tondela-Viseu, Portugal  
Diretor de Serviço: Dr. Simões Torres

#### Address

João Paulo Silva  
Bairro do Vale, Rua Gonçalves Lobato, lote 17-  
1º, 3515-156 Abraveses, Viseu, Portugal  
email: diasjp@gmail.com

#### Abstract

Langerhans cell histiocytosis (LCH) or histiocytosis X, is a rare disorder characterized by an abnormal increase in histiocyte cells, components of the immune system. Signs of LCH depend on the extent and location of the disease. A male predominance is observed.

#### Keywords

Cysts; Lung; Histiocytosis.

#### Resumo

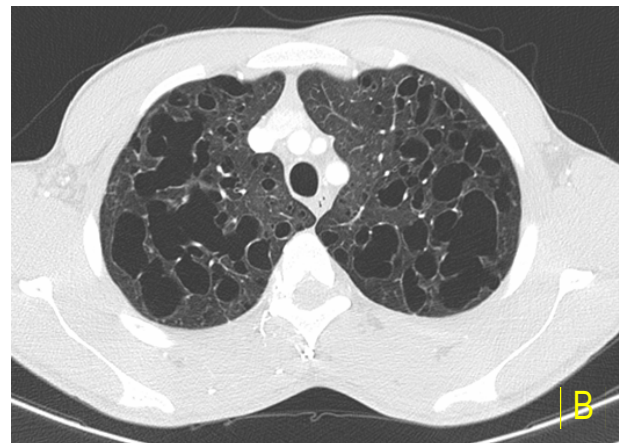
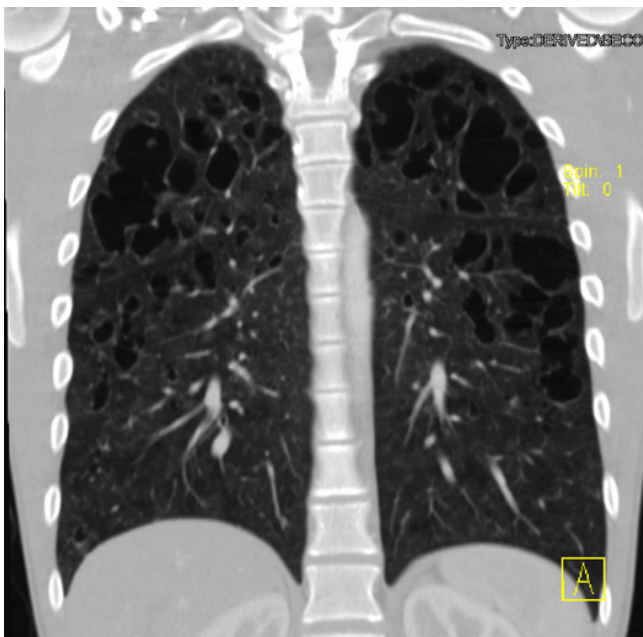
A Histiocitose de células de Langerhans (HCL), também designada de histiocitose X, é uma doença rara caracterizada por um aumento anormal de histiócitos, constituintes do sistema imune. Os sinais e sintomas da HCL dependem da localização e da extensão da doença. A doença tem maior prevalência no sexo masculino.

#### Palavras-chave

Quistos; Pulmão; Histiocitose.

19-year-old male patient, smoking 5 packs/year, working in an aviary, with a history of daily dry cough for 2 years and sudden episode of right pleuritic thoracalgia. Chest X-ray showed bilateral reinforcement of the pulmonary reticulum. The high resolution computed tomography of the thorax revealed exuberant bilaterally distributed pulmonary cysts with predominance by the upper lobes, with irregular and bizarre morphology, the largest reaching 3-4cm of greater diameter (Fig. A and B). The functional ventilatory study demonstrated obstruction of the small airways with increased residual

volume and a slight decrease in the diffusion capacity of carbon monoxide. He underwent bronchofibroscopy with bronchoalveolar lavage, whose immunohistochemical examination was positive for CD1a cells, allowing to establish the diagnosis. In adults with histiocytosis, the respiratory tract is most frequently involved and pulmonary lesions may be the only manifestation of the disease.<sup>1</sup> Imaging studies may reveal pulmonary (sometimes cavitated) nodules, irregularly shaped cysts, fibrosis, pneumothorax, and pleural effusion.<sup>2</sup>



---

**Received / Recebido** 25/01/2018  
**Acceptance / Aceite** 02/08/2018

**Ethical disclosures / Divulgações Éticas**

*Conflicts of interest:* The authors have no conflicts of interest to declare.

*Conflitos de interesse:* Os autores declaram não possuir conflitos de interesse.

*Financing Support:* This work has not received any contribution, grant or scholarship.

*Supporte financeiro:* O presente trabalho não foi suportado por nenhum subsídio ou bolsa.

*Confidentiality of data:* The authors declare that they have followed the protocols of their work center on the publication of data from patients.

*Confidencialidade dos dados:* Os autores declaram ter seguido os protocolos do seu centro de trabalho acerca da publicação dos dados de doentes.

*Protection of human and animal subjects:* The authors declare that the procedures followed were in accordance with the regulations of the relevant clinical research ethics committee and with those of the Code of Ethics of the World Medical Association (Declaration of Helsinki).

*Proteção de pessoas e animais:* Os autores declaram que os procedimentos seguidos estavam de acordo com os regulamentos estabelecidos pelos responsáveis da Comissão de Investigação Clínica e Ética e de acordo com a Declaração de Helsínquia da Associação Médica Mundial.

**References**

1. Lin MW, Chang YL, Lee YC, Cheng HL, Chen JS, Hsu HH. Pulmonary Langerhans cell histiocytosis. *Lung*. 2009;187:261-2.
2. Tazi A. Adult pulmonary Langerhans' cell histiocytosis. *Eur Respir J* 2006;27:1272-85.