

## Radiological Case Report / Caso Clínico

**Adenocarcinoma of the Urachus: A Primary Not to Overlook***Adenocarcinoma do Úraco: Um Tumor Primário a Não Negligenciar*Ana Sofia Alves<sup>1</sup>, Rita Camelo<sup>1</sup>, Margarida Varela<sup>2</sup>, João Lopes Dias<sup>1</sup>

<sup>1</sup>Radiology Department, Centro Hospitalar Universitário de Lisboa Central, Lisboa, Portugal

<sup>2</sup>Pathology Department, Centro Hospitalar e Universitário de Lisboa Central, Lisboa, Portugal

**Address**

Ana Sofia Figueiredo Alves  
Radiology Department  
Hospital de São José, Centro Hospitalar Universitário de Lisboa Central  
R. José António Serrano  
1150-199 Lisboa, Portugal  
e-mail: sofiafalves92@gmail.com

**Received:** 15/01/2021

**Accepted:** 19/04/2021

**Published:** 10/09/2021

© Author(s) (or their employer(s)) and ARP  
2021. Re-use permitted under CC BY-NC. No commercial re-use.

**Abstract**

Urachal carcinoma is a rare and aggressive neoplasm, involving the urachus, a remnant of the fetal genitourinary tract that extends from the umbilicus to the dome of the bladder.

We present a 49-year-old woman with a history of pelvic discomfort and a palpable suprapubic mass. Pelvic ultrasound and magnetic resonance revealed a 55-mm midline supravescical mass, arising from the urachus and extending inferiorly through the bladder. The characteristics of the mass and its location favored the diagnosis of urachal carcinoma. There were no regional or distant metastases. The patient underwent surgical resection of the tumor and histopathological examination confirmed the diagnosis of a non-cystic enteric type urachal adenocarcinoma.

The purpose of this article is to present a case of primary adenocarcinoma of the urachus, describe its epidemiology and clinical features, as well as illustrate its key imaging findings along with pathologic correlation.

**Keywords**

Urachus; Adenocarcinoma; Urinary bladder; Magnetic resonance imaging.

**Resumo**

O carcinoma do úraco é uma neoplasia rara e agressiva, que envolve o úraco, um remanescente do trato genito-urinário fetal que se estende desde o umbigo à cúpula vesical.

Aquí apresentamos uma mulher de 49 anos com história de desconforto pélvico e massa supra-púbica palpável. A ecografia pélvica e a ressonância magnética revelaram uma massa supravescical na linha média de 55 mm, com origem no úraco e que se estendia inferiormente para a bexiga. As características da massa e a sua localização favoreceram o diagnóstico de carcinoma do úraco. Sem evidência de metástases regionais ou à distância. A doente foi submetida a ressecção cirúrgica do tumor e o exame histopatológico confirmou o diagnóstico de adenocarcinoma do úraco tipo entérico.

O objetivo deste artigo é apresentar um caso de adenocarcinoma primário do úraco, descrever a sua epidemiologia e características clínicas, bem como ilustrar os principais achados de imagem juntamente com a correlação anatomopatológica.

**Palavras-chave**

Úraco; Adenocarcinoma; Bexiga; Ressonância magnética.

**Introduction**

Urachal carcinoma is a rare neoplasm that accounts for 0.01% of all adult cancers and 0.5%-2.0% of all bladder malignancies.<sup>1,2</sup> Firstly described by Hue and Jacquin in 1863, urachal carcinomas are more common in men between 20 and 90 years old, with a peak in the 50s.<sup>1,3</sup> Risk factors remain unclear.

Clinical manifestations include hematuria, abdominal pain, suprapubic mass, irritative voiding symptoms, and umbilical discharge.<sup>4</sup> However, due to their extraperitoneal location, these tumors may be initially clinically silent and only manifest at advanced stages due to mass-effect symptoms, local invasion or metastatic disease.<sup>3,5</sup> This diagnostic delay usually carries a poor prognosis.

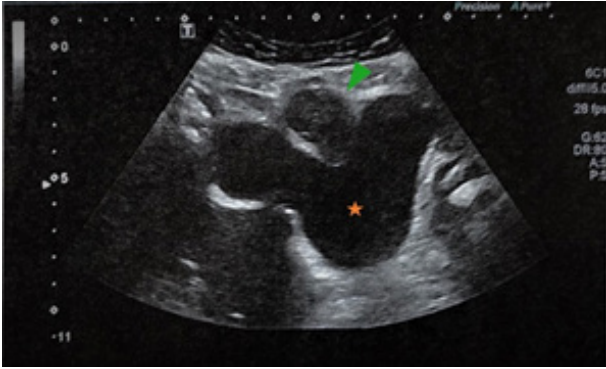
The diagnostic evaluation for urachal carcinoma should include a careful history and physical examination. A urine analysis with cytology may be helpful as it can confirm hematuria or demonstrate the presence of atypical cells. However, urachal carcinoma is primarily an extravescical cancer, therefore hematuria and positive urine cytology only occur when the tumor has already invaded the mucosa.

A cystoscopy is also recommended to evaluate if the lesion is covered with normal mucosa, as seen in early stages, or if it is an ulcerated mass due to the intramural spread.<sup>2,6</sup> The definitive diagnosis is histological.

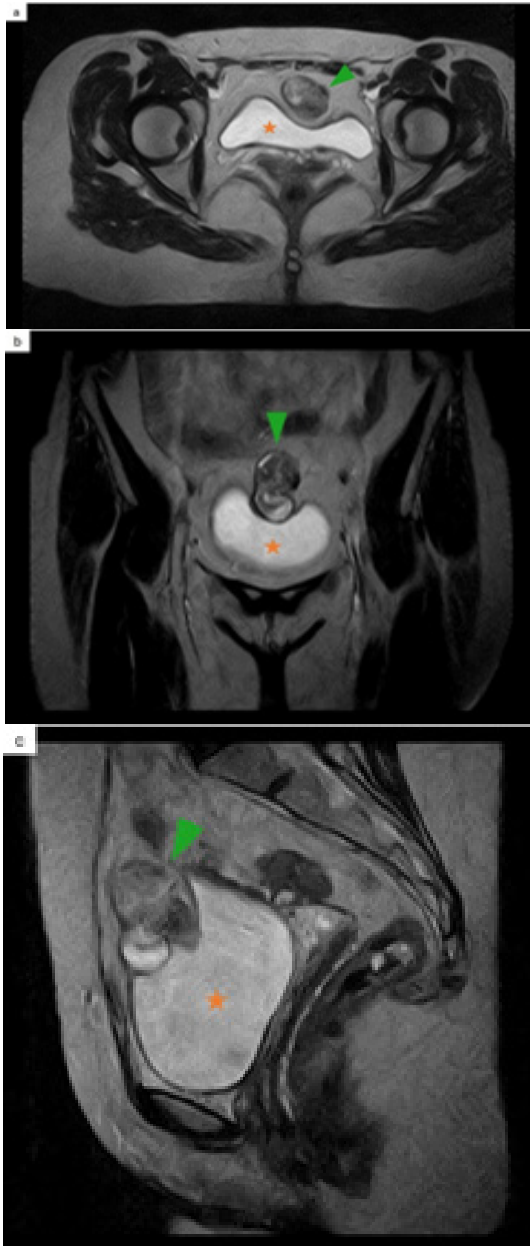
**Case Presentation**

A 49-year-old woman was referred to our hospital with a history of recurrent pelvic discomfort for the previous 3-4 weeks. There were no urogenital symptoms or fever. Her medical history was unremarkable. On physical examination, a firm and non-tender midline, suprapubic mass was palpable. Laboratory test results were normal.

A pelvic ultrasound (US) revealed a 55-mm supravescical, midline, solid tumor (Figure 1). The lesion was heterogeneous, mainly hypoechoic, with some foci of increased echogenicity. Due to its better contrast resolution, a pelvic magnetic resonance imaging (MRI) was performed, confirming the presence of a 55-mm midline, intra-abdominal, and infraumbilical solid tumor. The lesion showed heterogeneous signal intensity on T2-weighted images (WI) (Figure 2), with both hypo and



**Figure 1** – Pelvic US revealing a 55-mm supravvesical, midline, solid mass, mainly hypochoic, with some foci of increased echogenicity. Green arrowhead: urachal adenocarcinoma. Orange star: bladder.

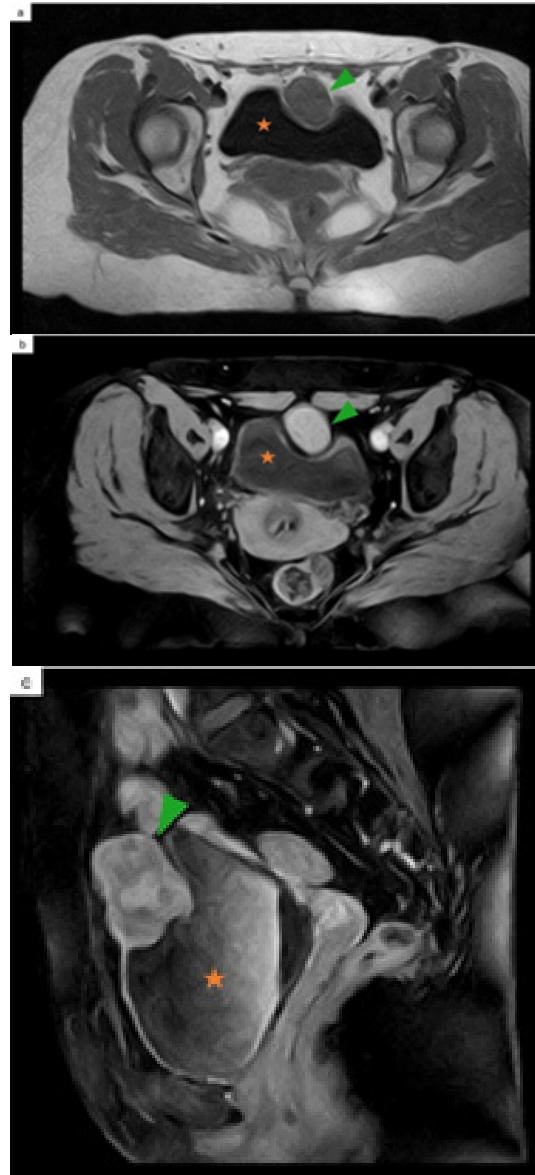


**Figure 2** – Pelvic MRI. Axial (a), coronal (b) and sagittal (c) T2-WI show a midline lobulated mass, with heterogeneous signal intensity. Green arrowhead: urachal adenocarcinoma. Orange star: bladder.

hyperintense areas. On T1-WI, the lesion was isointense to the abdominal wall muscles and bladder wall. After gadolinium administration, it showed avid enhancement (Figure 3 a,b). Inferiorly, the tumor extended through the dome and anterosuperior wall of the bladder, with no fat interface in between, a highly suspicious feature of invasion (Figure 3 c). Anteriorly, it extended towards the abdominal wall, without signs of infiltration. There were also no signs of invasion of the peritoneal reflection. The characteristics of the mass and its location favored a urachal carcinoma as the main diagnosis. A chest, abdominal and pelvic computed tomography (CT) revealed no regional or distant metastases.

The patient underwent a partial cystectomy with en bloc resection of the tumor, as well as the urachal remnant and the umbilicus. Bilateral pelvic lymph node dissection was also performed.

There was a 55-mm solid nodular lesion located in the dome, with a friable and grayish-white cut surface.



**Figure 3** – Pelvic MRI. Axial T1 pre-contrast (a) and FS T1 post-contrast (b) demonstrate an intermediate signal intensity lesion (a), with avid contrast enhancement (b). Sagittal FS T1 post-contrast (c) establishes the extension inferiorly through the dome and anterosuperior wall of the bladder. Green arrowhead: urachal adenocarcinoma. Orange star: bladder.

Histologic examination revealed a non-cystic enteric type urachal adenocarcinoma, which infiltrated the bladder wall with mucosa ulceration but spared the abdominal wall and peritoneum. The immunohistochemical profile was positive for CDX2 and CK20, while negative for p63 (Figure 4). Surgical margins were negative and there were no lymph node metastases. These features favored a urachal adenocarcinoma on stage IIIA (local urachal cancer extension to the bladder), according to the Sheldon staging system.<sup>1</sup>

A colonoscopy was performed, and it was negative for primary colorectal cancer.

A follow-up contrast-enhanced CT scan performed 6-months after surgery revealed a hypoattenuating lesion in the right liver lobe with 25-mm in diameter that was considered suspicious (Figure 5 a). A subsequent 18F-fluorodeoxyglucose positron emission tomography-computed tomography (18F-FDG PET/CT) scan of the entire body confirmed the diagnosis of single liver metastasis (Figure 5 b).

## Discussion / Conclusion

The urachus is a midline embryological ductal remnant of the fetal genitourinary tract that originates from the allantois and the cloaca, extending from the umbilicus to the dome of the bladder.<sup>3</sup> It usually involutes before birth to a fibrous band and becomes the median umbilical ligament.<sup>4</sup> It is located extraperitoneally, within the space of Retzius, surrounded anteriorly by the transversalis fascia and posteriorly by the peritoneum.<sup>4</sup>

Incomplete regression of the urachus may result in urachal remnants that have the potential to become infected or undergo malignant transformation.<sup>3</sup> Although it is normally lined by transitional epithelium, most urachal tumors are

adenocarcinomas (90%). The pathogenesis of urachal adenocarcinomas is not fully understood.<sup>1,3</sup>

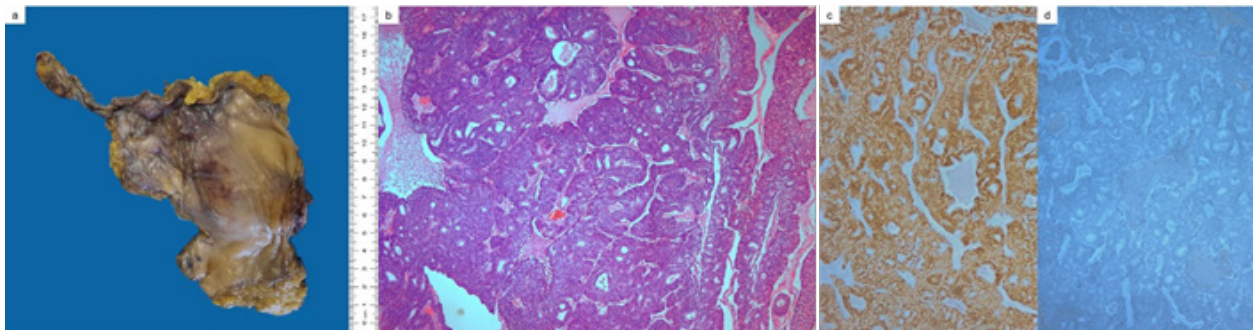
Adenocarcinomas can be non-cystic or cystic. The majority are non-cystic adenocarcinomas that include mucinous type (50%), enteric type (24%), mixed type (10%), not otherwise specified type (9%), and signet ring cell type (7%).<sup>7</sup> Immunohistochemistry shows some overlap among these different subtypes. The urachal adenocarcinoma is generally positive for CDX2 and CK20. p63 is rarely positive so it is useful to distinguish from urothelial carcinoma with glandular differentiation.<sup>7</sup>

Imaging plays an important role in the workup of urachal tumors as it can depict the location, size and invasiveness of the mass. Despite the absence of specific imaging findings for urachal carcinomas, a midline supravescical mass, adjacent to the abdominal wall, either solid, cystic, or mixed, should always raise the suspicion for this diagnosis.<sup>1,3,4,5</sup>

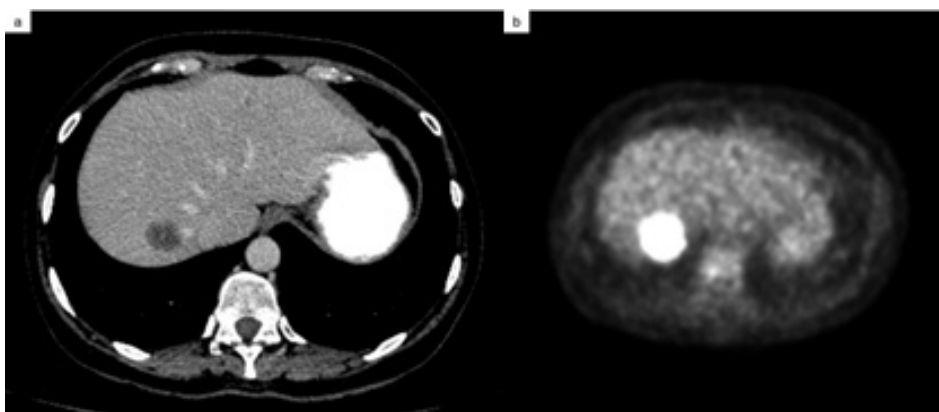
US is often the initial imaging modality as it is a non-invasive and readily available procedure in most clinical settings. CT and MRI are useful for staging. However, MRI is superior to CT for assessing local bladder wall, abdominal wall and peritoneal involvement. A contrast-enhanced CT scan of the thorax, abdomen and pelvis is essential for evaluation of distant metastasis.<sup>4,5</sup> In patients with contraindication for iodinated contrast medium, whole-body MRI with diffusion-weighted imaging or 18F-FDG PET/CT can provide accurate information on staging.

On MRI, urachal adenocarcinoma usually shows high signal intensity on T2-WI, which is particularly true for the most typical mucinous type. Literature data is scarce regarding specific features of other types.

Although urachal carcinoma can occur in any site along the urachal tract, it typically arises close to the dome of the bladder, as in our case.<sup>3</sup> The main differential diagnoses



**Figure 4** – Photograph of the gross specimen (a). Microscopic pathology confirming non-cystic enteric urachal adenocarcinoma (H&E, 50x) (b), with most of the neoplastic cells expressing CDX2 (50x) (c) and no staining for p63 (50x) (d).



**Figure 5** – Axial contrast-enhanced CT (a) demonstrates in the right lobe of the liver a hypoattenuating lesion with 25-mm. Axial 18F-FDG PET/CT (b) shows a corresponding focus of intense metabolic activity consistent with metastasis.

include benign urachal tumors, non-urachal carcinomas of the bladder, infected urachal remnant and metastasis from primary lesions of the colon, prostate or female genital tract.<sup>4,5</sup>

Our case fulfilled the diagnostic criteria stated in the last edition of the World Health Organization Classification of Tumors of the Urinary System and Male Genital Organs, which are: 1. location of the tumor in the bladder dome and/or anterior wall; 2. epicenter of carcinoma in the bladder wall; 3. absence of widespread cystitis cystica and/or cystitis glandularis beyond the dome or anterior wall, and 4. absence of a known primary elsewhere.<sup>7,8</sup> The presence of urachal remnant in association with the tumor is supportive of the diagnosis. Several staging systems have been proposed for urachal carcinoma (Sheldon,<sup>1</sup> Mayo,<sup>9</sup> and Ontario<sup>10</sup>) with none formally validated (Table 1).<sup>7</sup>

The most significant predictors of urachal adenocarcinoma prognosis are pathological tumor stage and surgical margins.<sup>11</sup> Regarding treatment, proper surgical intervention is critical. The standard surgical approach includes excision of the urachus and umbilicus combined with partial/radical cystectomy and bilateral pelvic lymphadenectomy.<sup>1,5,7,9</sup> Currently, there is no definitive role for neoadjuvant or adjuvant treatment.<sup>2,5,9</sup>

#### List of abbreviations

US: ultrasound; MRI: magnetic resonance imaging; WI: weighted images; CT: computed tomography; 18F-FDG PET/CT: 18F-fluorodeoxyglucose positron emission tomography-computed tomography.

**Table 1 – Urachal Carcinoma Staging Systems**

Sheldon <sup>1</sup>		Mayo <sup>9</sup>		Ontario <sup>10</sup>	
I	No invasion beyond the urachal mucosa	I	Confined to the urachus and/or bladder	T1	Confined to the submucosa
II	Invasion confined to the urachus itself	II	Extension beyond muscular layer of the urachus and/or the bladder	T2	Confined to the bladder muscular wall
III	<u>Local extension into:</u>	III	Infiltration to the regional lymph nodes	T3	Extension into the periurachal or vesical soft tissue
	A - Bladder				
	B - Abdominal wall				
	C - Peritoneum				
IV	<u>Metastasis to:</u>	IV	Infiltration to non-regional lymph nodes or other distant sites	T4	Invasion to adjacent organs, including abdominal wall
	A - Regional lymph nodes				
	B - Distant sites				

#### Ethical disclosures / Divulgações Éticas

*Conflicts of interest:* The authors have no conflicts of interest to declare.  
*Conflitos de interesse:* Os autores declaram não possuir conflitos de interesse.

*Financing Support:* This work has not received any contribution, grant or scholarship.

*Suporte financeiro:* O presente trabalho não foi suportado por nenhum subsídio ou bolsa.

*Confidentiality of data:* The authors declare that they have followed the protocols of their work center on the publication of data from patients.

*Confidencialidade dos dados:* Os autores declaram ter seguido os protocolos do seu centro de trabalho acerca da publicação dos dados de doentes.

*Protection of human and animal subjects:* The authors declare that the procedures followed were in accordance with the regulations of the relevant clinical research ethics committee and with those of the Code of Ethics of the World Medical Association (Declaration of Helsinki).

*Proteção de pessoas e animais:* Os autores declaram que os procedimentos seguidos estavam de acordo com os regulamentos estabelecidos pelos responsáveis da Comissão de Investigação Clínica e Ética e de acordo com a Declaração de Helsínquia da Associação Médica Mundial.

#### References

- Sheldon C, Clayman R, Gonzalez R, Williams R, Fraley E. Malignant urachal lesions. *Journal of Urology*. 1984;131:1-8.
- Bao B, Hatem M, Wong J. Urachal adenocarcinoma: a rare case report. *Radiology Case Reports*. 2017;12:65-9.

- Yu J, Kim K, Lee H, Lee Y, Yoon C, Kim M. Urachal remnant diseases: spectrum of CT and US findings. *RadioGraphics*. 2001;21:451-61.
- Parada Villavicencio C, Adam S, Nikolaidis P, Yaghmai V, Miller F. Imaging of the urachus: anomalies, complications, and mimics. *RadioGraphics*. 2016;36:2049-63.
- Koster I, Cleynndert P, Giard R. Urachal carcinoma. *RadioGraphics*. 2009;29:939-42.
- Monteiro V, Cunha T. Urachal carcinoma: imaging findings. *Acta Radiologica Short Reports*. 2012;1:1-3.
- Paner G, Lopez-Beltran A, Sirohi D, Amin M. Updates in the pathologic diagnosis and classification of epithelial neoplasms of urachal origin. *Advances In Anatomic Pathology*. 2016;23:71-83.
- Moch H. WHO classification of tumours of the urinary system and male genital organs. Lyon: International Agency for Research on Cancer. 2016.
- Ashley R, Inman B, Sebo T, Leibovich B, Blute M, Kwon E et al. Urachal carcinoma: clinicopathologic features and long-term outcomes of an aggressive malignancy. *Cancer*. 2006;107:712-20.
- Pinthus J, Haddad R, Trachtenberg J, Holowaty E, Bowler J, Herzenberg A et al. Population based survival data on urachal tumors. *Journal of Urology*. 2006;175:2042-7.
- Herr H, Bochner B, Sharp D, Dalbagni G, Reuter V. Urachal carcinoma: contemporary surgical outcomes. *Journal of Urology*. 2007;178:74-8.