

ARP Case Report nº 24: What is your diagnosis?

Caso Clínico ARP nº 24: Qual o seu diagnóstico?

Pedro Maganinho, João Carvalho, Filipa Lima Coelho, João Amorim, Manuela França

Serviço de Radiologia, Centro Hospitalar Universitário do Porto, Porto, Portugal

Case Presentation

A 68-year-old patient with a history of chronic kidney disease and kidney transplantation was referred to a Gastroenterology consultation for evaluation of intra-hepatic bile ducts dilatation revealed in abdominal ultrasound (US). Laboratory results did not reveal

significant changes on liver tests. Abdominal computed tomography was initially performed followed by magnetic resonance. What is the diagnosis and the most probable etiology?

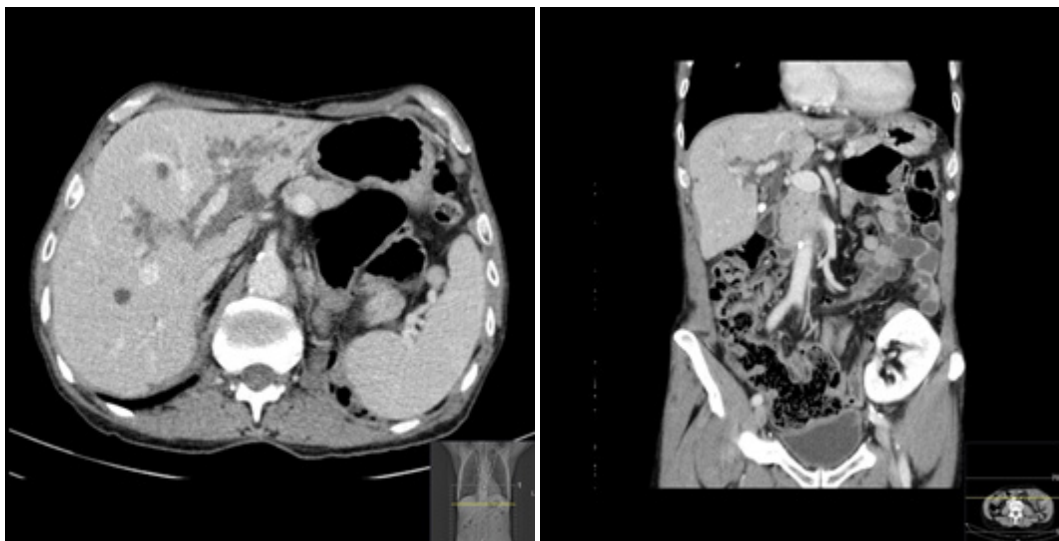


Figure 1 – Axial and coronal soft tissue window, 3mm slice thickness, contrast-enhanced CT.

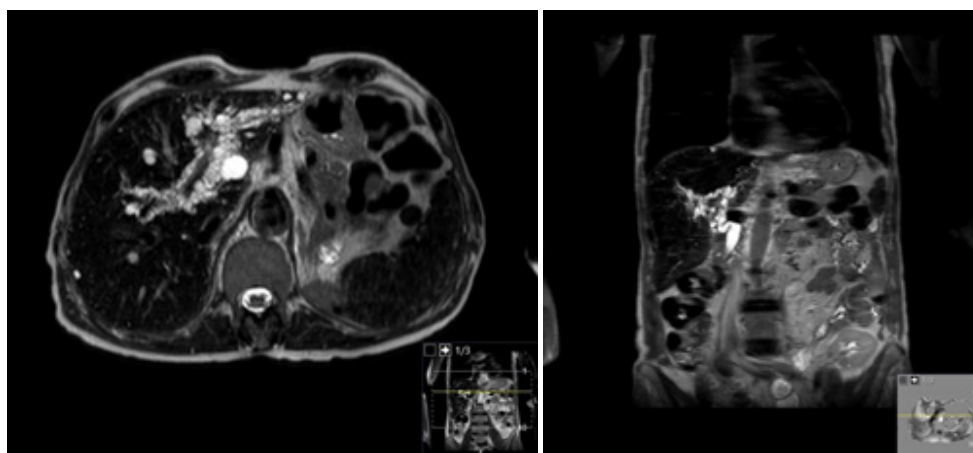


Figure 2 – Axial and coronal T2-weighted TSE.

Send your answer containing the diagnosis (s) to the email address actarp.on@gmail.com.
The names of the authors of the correct answers will be published in the next issue of the ARP in the case solution.