
Paleoradiology and N.D.T. by X-rays - Visual abstracts about Radiology and the past: secrets unveiled /
Paleorradiologia e A.N.D. por Raios-X — Abstractos Visuais sobre Radiologia e o Passado

“X-Ray N.D.T. & Taxidermy: Two Examples of Analysis about Construction, Conservation and Repair”

“Análise Não-Destrutiva por Raios X e Taxidermia: Dois Exemplos sobre Construção, Conservação e Restauro”

Carlos Prates^{1,2}

Laboratório de Conservação e Restauro do MUHNAC - ULisboa / IMI-Affidea

Pt

Estudo de 2 modelos da Coleção Valentim dos Santos

Projecto: Margarida Cerdeira;

Supervisão: Laura Moura e Judite Alves

¹Secção de Paleorradiologia e A.N.D por Raios X da SPRMN, Lisboa, Portugal

²IMI/Affidea, Portugal

Received: 20/03/2025

Accepted: 28/03/2025

Published: 30/04/2025



Creative Commons - Attribution
Non-Commercial Use - (CC-BY-NC)

VISUAL ABSTRACTS about RADIOLOGY and the PAST: secrets unveiled

SPRMN — Section of Paleoradiology e N.D.T. by X-Rays (case nº4)

X-ray N.D.T. & TAXIDERMY: Two examples of analysis about Construction, Conservation and Repair

TAXIDERMY Creates lifelike animals by mounting their skins on suitable frames, modelling and stuffing. However, these models degrade over time, requiring conservation and repair.

NDT (Nondestructive Testing) through X-rays identifies construction techniques, material composition, and areas of deterioration.

— **X-ray Radiography:** Reveals hidden structures, supporting wires, frame materials, and damage.

— **CT Scanning:** Provides better visualization, 3D and Multiplanar views, distinguishes materials, and identifies voids, fractures, or past repairs.

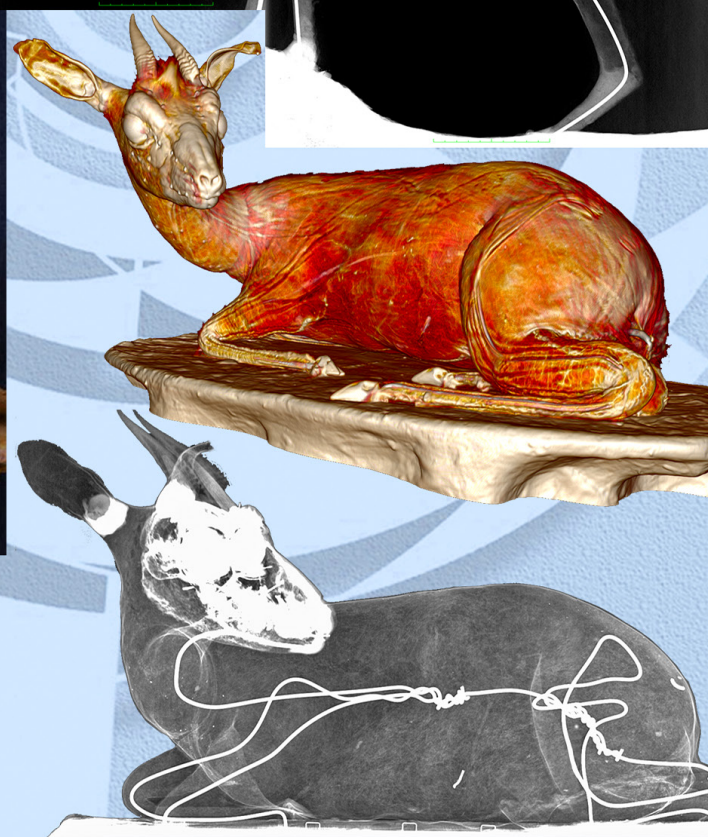
ARTIC FOX (right).

Radiography depicts the absence of any bone structure, with the skin and stuffing material sustained by wireframes and multiple metal staple-like fixations.



SMALL ANTELOPE (above & 3D CT right).

CT details reveal the presence of the original skull and horns. However, the multiplanar oblique sagittal head view (below), shows only the upper teeth, proving the mandible is absent. A metal wire frame (right) sustains the stuffed body position.



Laboratório de Conservação e Restauro do MUHNAC - ULisboa / IMI-Affidea Pt.
Study of 2 models from the Colecção Valentim dos Santos.
Project: Margarida Cerdeira
Supervision: Laura Moura and Judite Alves