

Exuberant Choroidal Melanoma in COVID-19 Era

Melanoma da Coroide Exuberante na Era COVID-19

 Ana Marta^{1,2}, Vasco Miranda^{1,2}, Maria Araújo¹

¹ Department of Ophthalmology, Centro Hospitalar Universitário do Porto, Oporto, Portugal

² Instituto de Ciências Biomédicas Abel Salazar, Oporto, Portugal

Recebido/Received: 2021-04-27 | **Aceite/Accepted:** 2022-04-26 | **Publicado/Published:** 2022-06-30

© Author(s) (or their employer(s)) and *Oftalmologia* 2022. Re-use permitted under CC BY-NC. No commercial re-use.

© Autor (es) (ou seu (s) empregador (es)) e *Oftalmologia* 2022. Reutilização permitida de acordo com CC BY-NC. Nenhuma reutilização comercial.

DOI: <https://doi.org/10.48560/rspo.24345>

KEYWORDS: Choroid Neoplasms; COVID-19; Melanoma.

PALAVRAS-CHAVE: COVID-19; Melanoma; Neoplasias da Coroide.

A 61-year-old man presented with a superior visual field defect on his right eye (RE), for 3 months, but he delayed coming to the emergency department for fear of coronavirus. His best-corrected visual acuity of the RE was 1.25/10 and biomicroscopy generated unremarkable findings. A large, dome-shaped, pigmented, and peripheral lesion with an adjacent exsudative retinal detachment was seen on ophthalmoscopy and documented by an ultra-wide field pseudocolor photograph captured using Optos (Fig. 1). B-scan ultrasonography confirms a low-moderate internally reflective dome-shaped choroidal lesion, sized 13x12 mm, with adjacent retinal detachment. The optical coherence tomography of the macula showed subretinal fluid reaching the fovea.

Patients are avoiding medical care due to fear of coronavirus.¹ Regarding choroidal melanoma, patients will present with more advanced disease with lost opportuni-

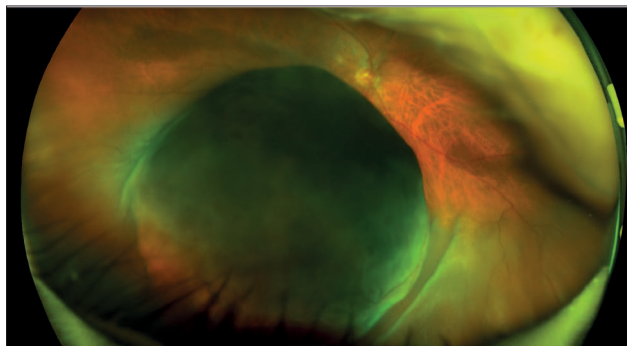


Figure 1. Ultra-wide field pseudocolor image of a patient with a large choroidal melanoma on the right eye. The photograph was captured using Optos.

ties for conserving vision and the eye.² We want to alert to this new reality that we have been facing and the need to provide health literacy, avoiding unnecessary costs for patients, and conserve healthcare resources.

ACKNOWLEDGMENTS

We thank the patient for granting permission for this information to be published, and orthotic technician Daniel Almeida for carrying out the exam.

CONTRIBUTORSHIP STATEMENT / DECLARAÇÃO DE CONTRIBUIÇÃO:

All the authors had full access and take full responsibility for the integrity of the data and the accuracy of the data analysis. AM, VM and MA were responsible for creating the manuscript. MA supervised this manuscript and contributed with their expertise to its conclusion. All authors read and approved the final manuscript.

RESPONSABILIDADES ÉTICAS

Conflitos de Interesse: Os autores declaram a inexistência de conflitos de interesse na realização do presente trabalho.

Fontes de Financiamento: Não existiram fontes externas de financiamento para a realização deste artigo.

Confidencialidade dos Dados: Os autores declaram

ter seguido os protocolos da sua instituição acerca da publicação dos dados de doentes.

Consentimento: Consentimento do doente para publicação obtido.

Proveniência e Revisão por Pares: Não comissionado; revisão externa por pares.

ETHICAL DISCLOSURES

Conflicts of Interest: The authors have no conflicts of interest to declare.

Financing Support: This work has not received any contribution, grant or scholarship.

Confidentiality of Data: The authors declare that they have followed the protocols of their work center on the publication of data from patients.

Patient Consent: Consent for publication was obtained.

Provenance and Peer Review: Not commissioned; externally peer reviewed.

REFERENCES

1. Damato B. Managing patients with choroidal melanoma in the COVID-19 era: a personal perspective. *Br J Ophthalmol.* 2020;104:885-6. doi: 10.1136/bjophthalmol-2020-316686.
2. Jager MJ, Shields CL, Cebulla CM, Abdel-Rahman MH, Grossniklaus HE, Stern MH, et al. Uveal melanoma. *Nat Rev Dis Primers.* 2020;6:24. doi: 10.1038/s41572-020-0158-0. Erratum in: *Nat Rev Dis Primers.* 2022;8:4.



**Corresponding Author/
Autor Correspondente:**

Ana Marta

Department of Ophthalmology, Centro Hospitalar e Universitário do Porto
Largo do Prof. Abel Salazar,
4099-001 Porto, Portugal
analuisamarta2@gmail.com



ORCID: 0000-0003-3495-4649